

## Series **SWCR/WCR**

• Spring, Power or Manual Rewind • Arc Welding

### To handle #2 through 4/0 cable to 400 amps.

- For use with single-conductor electrode cable or grounding lead.
- 400-amp rated rotary electrical device.
- Instant use with any cable length unwound.
- Quick connection to your welder.
- Easy access and greaseable zerck fitting.

#### SWCR

- Non-sparking ratchet assembly.
- Declutching arbor is provided to prevent damage from reverse winding.
- A cable stop should be used.
- Four-way roller assembly. Roller position must be specified.

#### WCR

- Gear-driven crank rewind, chain and sprocket powered by an electric, hydraulic or compressed air motor or spring rewind.
- Auxiliary rewind and pinion brake standard.
- Chain guards are available, must be specified.
- Rollers and roller mounting brackets are accessory items. Specify roller position.



**Series SWCR**

Standard SR configuration shown with optional cable and stop



**Series WCR**

Standard configuration shown with Air Rewind (AWCR) option



**Protective Ground Lug Boot**

Part No. 9955.0202  
Standard on reel

# Series SWCR/WCR

• Spring, Power or Manual Rewind • Arc Welding

## PARTS DRAWING – SWCR ISO 94; WCR ISO 188

Model Number For power rewind see Note 4	Cable Capacity of Reel feet m						Approx. Weight Crank/Spring Rewind lb. kg see Note 3		Std. Roller Assy.	Reel Dimensions*** in. mm											
	Gauge of Cable						NET	SHIP		A	B	C	D	E	F CRANK	F PWR.	F SPRING	G	H	X	Y
	#2	#1	1/0	2/0	3/0	4/0															
SWCR716-23-24-15.5B	–	–	–	–	–	40	81	116	R204	9.25	3	15.5	24.5	22.75	–	–	10.88	23.88	12.5	4.5	20
	–	–	–	–	–	12	37	53		235	76	394	622	578	–	–	276	607	318	114	508
SWCR716-23-24-15.5G	85	85	60	60	60	–	85	120	R204	9.25	3	15.5	24.5	22.75	–	–	10.88	23.88	12.5	4.5	20
	26	26	18	18	18	–	39	54		235	76	394	622	578	–	–	276	607	318	114	508
SWCR716-25-26-15.5B	–	–	–	–	60	50	94	126	R204	9.25	3	15.5	26.25	24.75	–	–	10.88	25.88	13.5	4.5	21.75
	–	–	–	–	18	15	41	57		235	76	394	667	629	–	–	276	657	343	114	552
SWCR716-25-26-15.5A	–	–	100	–	–	–	106	141	R205	10.25	3	15.5	26.25	24.75	–	–	12.12	25.88	13.5	5.5	21.75
	–	–	30	–	–	–	48	64		260	76	394	667	629	–	–	308	657	343	140	552
WCR16-19-21	–	275	200	200	150	150	71	106	–	13	7.5	10.5	20.5	18.75	15	19.75	–	21.62	12.25	7.75	16.75
	–	84	61	61	46	46	32	48		330	191	267	521	476	381	502	–	549	311	197	425
WCR16-23-24	–	–	–	–	300	200	78	113	–	13	7.5	10.5	20.5	22.75	15	19.75	–	23.62	12.25	7.75	16.75
	–	–	–	–	91	61	35	51		330	191	267	521	578	381	502	–	600	311	197	425

**Notes:**

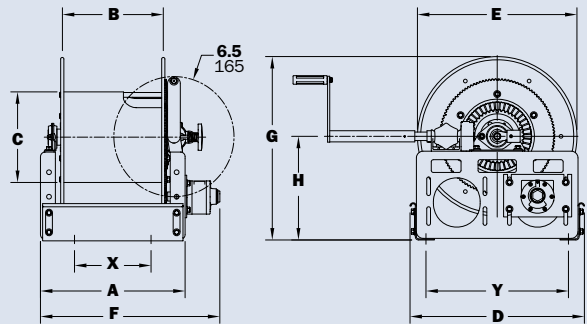
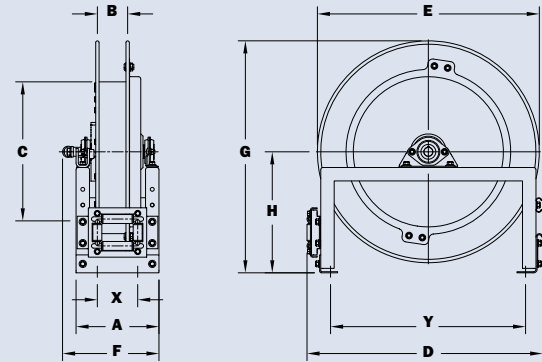
- Specifications subject to change.
- Upon request, reels can be supplied with drum lengths other than shown and with disc sizes in other diameters.
- Weights shown in chart are for crank or spring rewind models. ADD these amounts for power rewind models (Series WCR):

	Net lbs/kg	Ship lbs/kg
Electric	40/18.1	40/18.1
Hydraulic	20/9.1	20/9.1
Air	20/9.1	20/9.1

- When ordering power rewind Series WCR, prefix model number with:  
**A** = Air Rewind  
**EP** = Electric Rewind  
**HD** = Hydraulic Rewind

(Air rewind reels are supplied with control valve and 18" air hose; 12v and 24v DC rewind reels are supplied with switch and solenoid; 115v AC rewind reels require double pole single throw switch which is not supplied, but can be ordered separately, hydraulic rewind reels are not supplied with control valve.)

- Be sure to check dimensions and weights prior to ordering.**
  - For welding hose and cable specifications see page 10.
  - Finish:** Refer to Ordering & Accessory catalog page 19.
- \*\*\* X, Y indicate mounting holes. See page 10.



**Available Roller Positions**

